

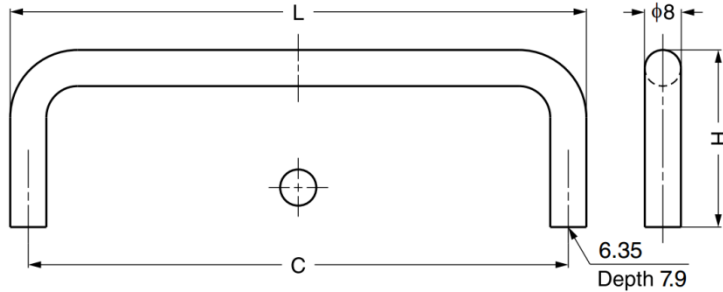
## GSWP Stainless Steel 316 Handle

### Features

- Ideal for harsh and high corrosion environments

### Material

- Stainless steel 316, satin finish



Part No.	L	C	H
GSWP-630/S	84.2	76.2	34
GSWP-635/S	96.9	88.9	
GSWP-640/S	109.6	101.6	
GSWP-696/S	104	96	

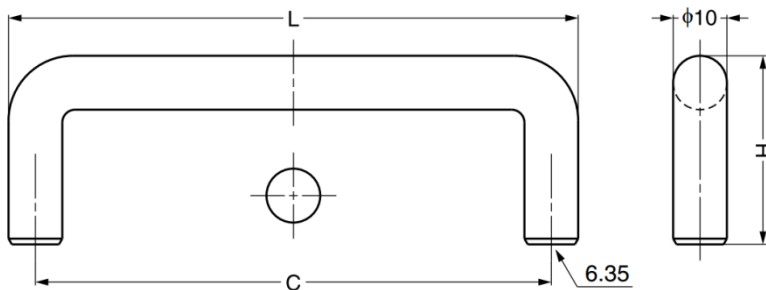
## GSWF Stainless Steel 316 Handle

### Features

- Ideal for harsh and high corrosion environments

### Material

- Stainless steel 316, satin finish



Part No.	L	C	H
GSWF-640	111	101.5	35
GSWF-650	136.5	127	
GSWF-660	162	152.5	
GSWF-690	238	228.5	
GSWF-6120	314.5	305	